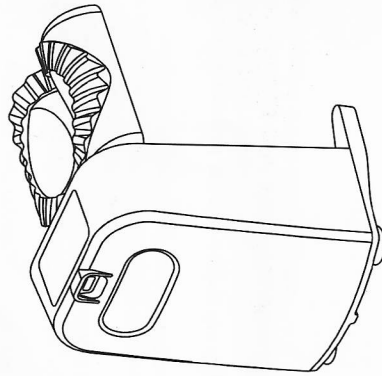
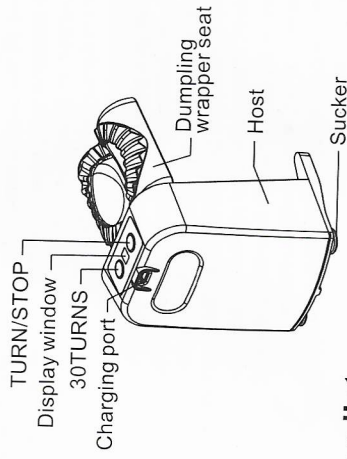


Electric dumpling machine User Manual



Product structure



Packing list

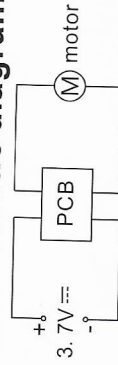
Name	Quantity
Machine	1
USB charging cable	1
Specification	1

Product specification

Model	D725
Rated voltage	3.7V ==
Rated power	5W
Charging voltage/current	5V == 1A

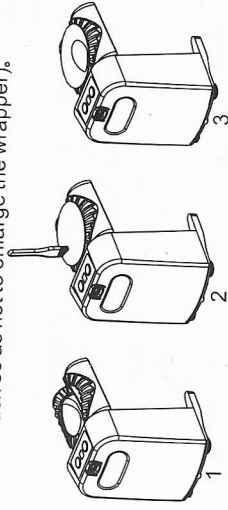
Please read this manual in detail prior to first use

Electrical schematic diagram

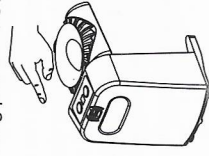


Instructions for use

1. For the first time, please fully charge the host. After fully charging, the three red lights in the display window will be steady on.
2. The first step is to press the machine on the flat surface as shown in Figure 1;
The second step is to put the wrapper on the wrapper holder, and then brush water around the wrapper with a brush, as shown in Figure 2 (Put the wrapper in the center of the wrapper seat);
The third step is to put the filling into the center area of the dumpling wrapper as shown in Figure 3 (Note: the filling should not be too much so as not to enlarge the wrapper).



3. **TURN/STOP** : Press a work once, make a dumpling;
Press "TURN/STOP" the machine from working automatically.
30TURNS : Choose "30TURNS" can work continuously to pack 30 dumplings, there are two speeds of 6 seconds or 9 seconds can be selected, select after the lamp flashing two seconds to start the countdown, 6 seconds or 9 seconds for a cycle, need to stop working press "TURN/STOP".



4. The indicator indicates.

state	Indicator light	state	Indicator light
In charge	Three-word shine	Manual gear	A word light is on
Fully charged	Three-character light	Automatic gear	Digital flashing countdown
Battery loss	The figure 8 light flashes five times		

Matters needing attention

1. Please read this manual carefully when using for the first time.
2. This product has a built-in lithium battery. Please note the following:
 - a. Please store and use the product in an environment of 0-45°C.
 - b. If you do not use it for a long time, please charge it fully every three months to prevent battery damage.
 - c. It is normal that the charging speed may slow down in an environment lower than 10 ° C. Do not exceed the charging ambient temperature 45 degrees Celsius.
3. This product is a portable electric dumpling making machine, please charge this product before the first use.
4. Do not use sharp objects to scratch the machine, and it is strictly prohibited to disassemble or transform the product.
5. It is strictly prohibited to put any hard food materials (bones, etc.) or other objects into the dumpling wrapper to run, in case of damage Personal injury or damage to machinery.
6. Do not put any part of this product into the dishwasher, microwave oven, disinfection cabinet, or hot water exceeding 60°C, Cleaning or disinfection, do not use other products to heat, so as to avoid deformation or damage of parts, extrusion, piercing, Short circuit this product, or put into fire and water, or placed in high temperature above 60°C environment.
7. Hair, cloth and other utensils should be kept away from the machine during operation to prevent personal injury or damage to the machine.

8. The continuous working time of this product shall not exceed 30 minutes to ensure the service life of the product.
9. If the machine fails, please do not disassemble the machine by yourself. In order to avoid danger, it must be designated by the manufacturer. Professional maintenance personnel to carry out replacement inspection.
10. Do not use abrasive steel velvet cleaners or corrosive liquids (such as gasoline or acetone) to clean the product. The host cannot be washed directly with clean water.
11. Do not place this product in high temperature, strong magnetic, flammable and explosive gas (such as natural gas, biogas, etc.) environment. In order to avoid the parts work abnormal or fire and other accidents.
12. The machine should be placed on a stable and reliable working surface.
13. This product contains lithium battery, it is strictly prohibited to open the product shell without permission, to avoid the possible battery, motherboard, etc. Sabotage or other danger.
14. Do not run the product unattended. Store the product in a place inaccessible to children. Do not allow people who are physically or mentally disabled or who lack relevant experience and knowledge (including children) use or play with the product.
15. This product is only suitable for personal or family use, not suitable for commercial use.
16. Dumpling seat in the process of operation is strictly prohibited to put the fingers into it, so as not to hurt.
17. It is recommended to use 5V-1A, 5V-1.5A charger produced by regular manufacturers to charge or use a power bank, computer USB port charging.

Fault analysis

Fault phenomenon	Indicator light	Cause analysis	troubleshooting
Charge	Light failure	Check whether the charging cable is loose	Replace the charging cable with a new one
A sudden stop in the middle of a job	light is off or on The figure 8 light flashes five times	Program distortion The battery is dead	Restart machine Please charge in time

Pay attention: The above is the common fault analysis and troubleshooting methods, other faults please contact customer service, do not disassemble and repair.

Cleaning and maintenance

1. Part of the host can only be wiped with a soft wet cloth instead of being washed directly with water.
2. Do not use abrasive or corrosive cleaning agent to clean.
3. It is strictly prohibited to sterilize all parts of the product at high temperature.
4. After cleaning the product, please wipe or dry all parts of the product and put them away.
5. If the product is not used for a long time, please charge and maintain the product within three months.